

BALDOR® • RELIANCE 

Product Information Packet

IDM3770T

38M 4P TEBC HOR 213TC T'STATS INVERTER

Part Detail							
Revision:	A	Status:	PRD/A	Change #:		Proprietary:	No
Type:	AC	Elec. Spec:	07WGX790	CD Diagram:	CD0005	Mfg Plant:	
Mech. Spec:	07D515	Layout:	07LYD515	Poles:	04	Created Date:	03-18-2019
Base:	RG	Eff. Date:	07-11-2019	Leads:	9#14		

Specs			
Catalog Number:	IDM3770T	Inverter Code:	Inverter Duty
Enclosure:	TEBC	KVA Code:	J
Frame:	213TC	Lifting Lugs:	Standard Lifting Lugs
Frame Material:	Iron	Locked Bearing Indicator:	Locked Bearing
Output @ Frequency:	7.500 HP @ 60 HZ	Motor Lead Quantity/Wire Size:	9 @ 14 AWG
Synchronous Speed @ Frequency:	1800 RPM @ 60 HZ	Motor Lead Exit:	Ko Box
Voltage @ Frequency:	230.0 V @ 60 HZ	Motor Lead Termination:	Flying Leads
	460.0 V @ 60 HZ	Motor Type:	0738M
XP Class and Group:	None	Mounting Arrangement:	F1
XP Division:	Not Applicable	Power Factor:	81
Agency Approvals:	UR	Product Family:	General Purpose
	CSA	Pulley End Bearing Type:	Ball
Auxillary Box:	No Auxillary Box	Pulley Face Code:	C-Face
Auxillary Box Lead Termination:	None	Pulley Shaft Indicator:	Standard
Base Indicator:	Rigid	Rodent Screen:	None
Bearing Grease Type:	Polyrex EM (-20F +300F)	RoHS Status:	ROHS COMPLIANT
Blower:	BLOWER	Shaft Extension Location:	Pulley End
Current @ Voltage:	19.000 A @ 230.0 V	Shaft Ground Indicator:	No Shaft Grounding

Product Information Packet: IDM3770T - 38M 4P TEBC HOR 213TC T'STATS INVERTER

	9.500 A @ 460.0 V	Shaft Rotation:	Reversible
Design Code:	A	Shaft Slinger Indicator:	No Slinger
Drip Cover:	No Drip Cover	Speed Code:	Single Speed
Duty Rating:	CONT	Motor Standards:	NEMA
Electrically Isolated Bearing:	Not Electrically Isolated	Starting Method:	Direct on line
Feedback Device:	NO FEEDBACK	Thermal Device - Bearing:	None
Front Face Code:	Encoder/Feedback Device	Thermal Device - Winding:	Normally Closed Thermostat
Front Shaft Indicator:	None	Vibration Sensor Indicator:	No Vibration Sensor
Heater Indicator:	No Heater	Winding Thermal 1:	None
Insulation Class:	H	Winding Thermal 2:	None

Nameplate NP1162L	
CAT NO	IDM3770T
SPEC.	07D515X790G1
FRAME	213TC HP 7.5 TE
VOLTS	230/460
MAG CUR	8.6/4.3 FLA 19/9.5
RPM	1770 RPM MAX 4000
HZ	60 PH 3 CLASS H
SER.F.	1.00 DES A SL HZ 1
NEMA-NOM-EFF	91.7 WK2 0.934
BLWR V	PH HZ A
RATING	40C AMB-CONT
DE BRG	6307 ODE BRG 6206
CC	010A SN

Parts List		
Part Number	Description	Quantity
SA371176	SA 07D515X790G1	1.000 EA
RA360856	RA 07D515X790G1	1.000 EA
HW3201A05	3/8-16 EYEBOLT	1.000 EA
09CB3002SP	CB W/1.38 LEAD HOLE FOR 37, 39, 307 & 30	1.000 EA
09GS1000SP	GASKET-CONDUIT BOX, 1/16 THICK LEXIDE	1.000 EA
51XW2520A12	.25-20 X .75, TAPTITE II, HEX WSHR SLTD	2.000 EA
59XW2520G07	.25-20X.44,HEX SER WSHR,TAPTITE 2,GREEN	1.000 EA
37EP1100B61	FR TEBC 206 BRG W/ GRSR & THRU-SHAFT ENC	1.000 EA
HW4500A01	1641B(ALEMITE)400 UNIV, GREASE FITT	1.000 EA
HW5100A06	W2420-025 WVY WSHR (WB)	1.000 EA
37EP1300A01SP	FACE MT ENDPLATE-ENCL-307 BRG-213TC-215T	1.000 EA
HW4500A01	1641B(ALEMITE)400 UNIV, GREASE FITT	1.000 EA
10XN2520A30	HEX HD CAP SCREW-STD THD-.25 X 20 THD PE	4.000 EA
HW1001A25	LOCKWASHER 1/4, ZINC PLT .493 OD, .255 I	4.000 EA
XY3118A12	5/16-18 HEX NUT DIRECTIONAL SERRATION	4.000 EA
10XN2520A08	1/4-20X1/2 HEX HEAD CAP	2.000 EA
09CB3501SP	CONDUIT BOX LID FOR 09CB3001 & 09CB3002	1.000 EA
09GS1013SP	09 GS FOR 09CB3501 LID - LEXIDE	1.000 EA
51XW2520A12	.25-20 X .75, TAPTITE II, HEX WSHR SLTD	2.000 EA
HA1005A11	SLINGER, OD 2.00, ID 1.15,	1.000 EA
HW2501F21	KEY, 5/16 SQ X 2.375	1.000 EA
HA7000A02	KEY RETAINER RING, 1 1/8 DIA, 1 3/8 DIA	1.000 EA
85XU0407S04	4X1/4 U DRIVE PIN STAINLESS	2.000 EA
LB1115N	LABEL,LIFTING DEVICE (ON ROLLS)	1.000 EA

Parts List (continued)		
Part Number	Description	Quantity
MJ1000A02	GREASE, MOBIL POLYREX EM - 124047	0.050 LB
BLWM07-F	307 BLOWER ASSY. (07FH4015 & EF5100) F1,	1.000 EA
WD4101A08	STIMPSON #D3557,1.188 DIA. HOLE PLUG	1.000 EA
MG1000G27	MED CHARCOAL METALLIC GREY 400-0096	0.036 GA
HA3104A32	THRUBOLT- 5/16-18 X12.750	4.000 EA
LB1119N	WARNING LABEL	1.000 EA
LC0145B01	CONNECTION LABEL	1.000 EA
NP1162L	SS INV UL CSA CC	1.000 EA
07PA1016	PACKAGING GROUP, STD -E (07 TALL CRATE)	1.000 EA
MN416A01	TAG-INSTAL-MAINT no wire (1200/bx) 3/19	1.000 EA
PE-0000001	ZRTG PE ASSEMBLY	1.000 EA

NP VOLTS	230/460	MAX SAFE RPM	2700	WYE CONN EQ CKT OHMS PER PHASE (BASE RATING, 20C)			
NP AMPS	19/9.5	Base Volt	460	R1	0.745	X1	2.510
HP	7.5 HP	NL AMPS	4.30	R2	0.443	X2	1.930
BASE SPEED	1770	Slips(Hz)	1.00			XM	58.500
PHASE/Hz	3/60	WK2 (LB-FT2)	0.934				

Rated Full Load Data


	RPM	HP	Torque	Volts	Freq-Hz	Amps
Base Speed	1770	7.5	22.2	460	60	9.5
Max Speed	2654	7.5	14.8	460	90	8.9
Min Speed	0	0.0	22.2	26.62	1.00	9.5

Load Performance at Base Speed

	RPM	HP	Torque	Volts	Freq-Hz	Amps
No Load	1799	0.0	0.0	460	60	4.3
1/4	1793	1.9	5.5	460	60	4.8
1/2	1786	3.7	11.0	460	60	6.0
3/4	1778	5.6	16.5	460	60	7.6
Full Load	1770	7.5	22.2	460	60	9.5
O/L	1770	7.5	22.2	460	60	9.5

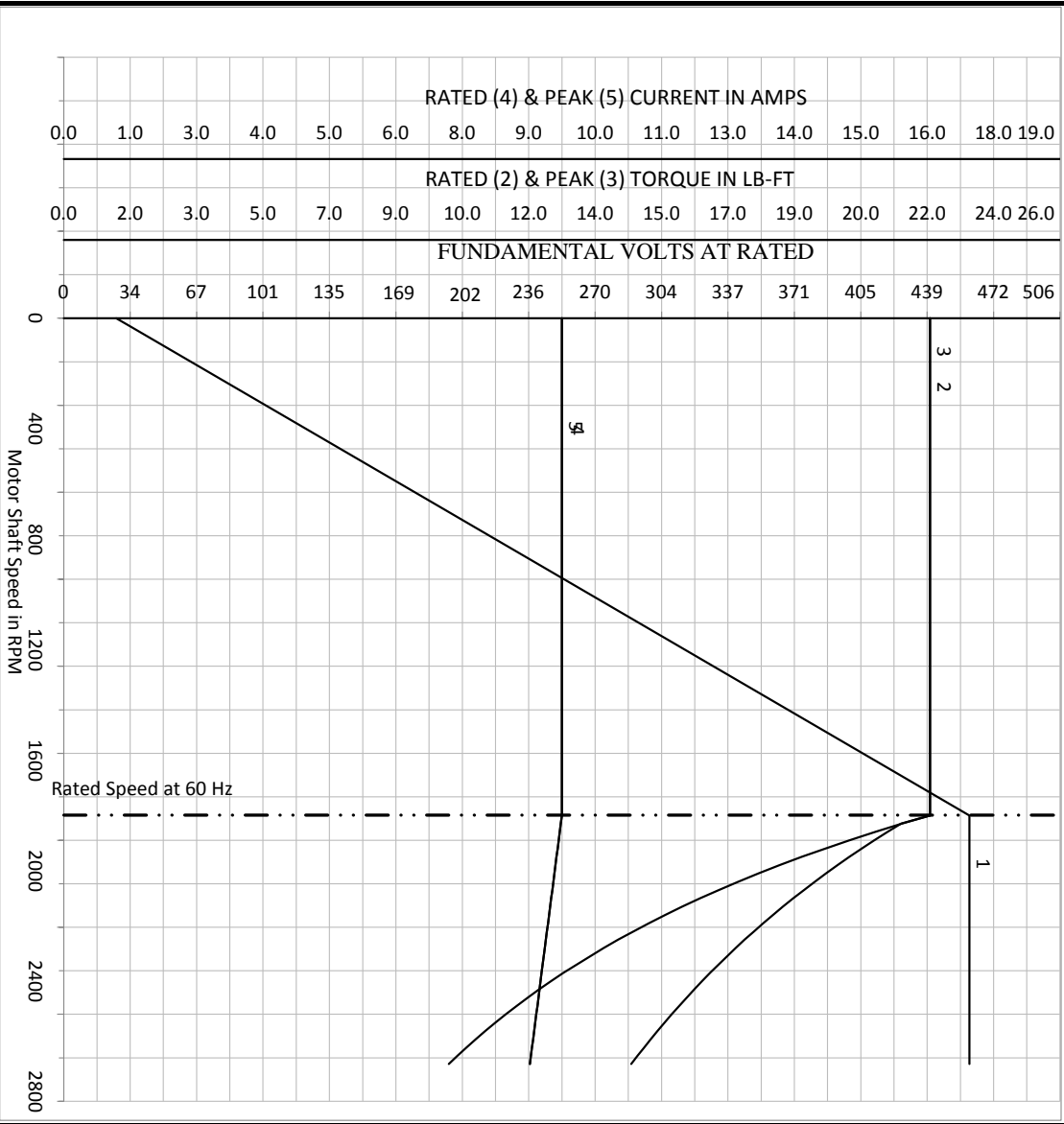
Blower Data	Volts	Ph/Hz	FL Amps	LR Amps	Frame	CFM

Remarks: Calculated Data
Vector PWM Inverter Duty

 A MEMBER OF THE ABB GROUP	DR BY	USJION	A-C MOTOR	07WGX790
	CK BY	USJION	PERFORMANCE	
	APP BY	USJION	CURVES	
	DATE	11/3/2017		Record: 67827

NP VOLTS	230/460	MAX SAFE RPM	2700	WYE CONN EQ CKT OHMS PER PHASE (BASE RATING, 20C)			
NP AMPS	19/9.5	Base Volt	460	R1	0.745	X1	2.510
HP	7.5 HP	NL AMPS	4.30	R2	0.443	X2	1.930
BASE SPEED	1770	Slips(Hz)	1.00	XM			58.500
PHASE/HZ	3/60	WK2 (LB-FT2)	0.934				

Variable Speed AC Motor Curves
Vector PWM Inverter Duty



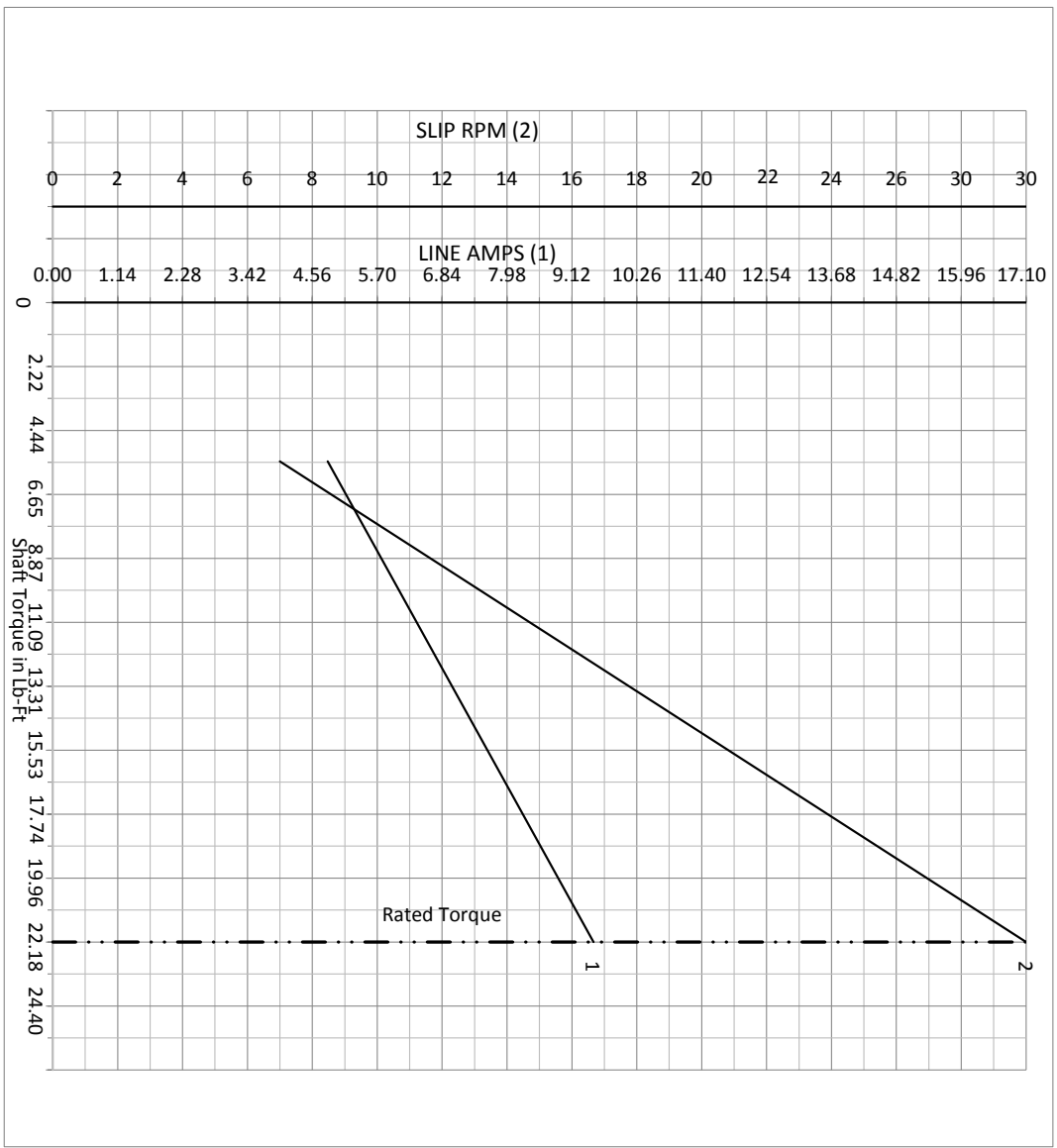
Calculated Data
Data Valid For Nameplate Speed Range only

BALDOR
A MEMBER OF THE ABB GROUP

DR BY	USJION	A-C MOTOR	07WGX790
CK BY		PERFORMANCE	
APP BY	USJION	CURVES	
DATE	11/3/2017		Record: 67827

NP VOLTS	230/460	MAX SAFE RPM	2700	WYE CONN EQ CKT OHMS PER PHASE (BASE RATING, 20C)			
NP AMPS	19/9.5	Base Volt	460	R1	0.745	X1	2.510
HP	7.5 HP	NL AMPS	4.30	R2	0.443	X2	1.930
BASE SPEED	1770	Slips(HZ)	1.00			XM	58.500
PHASE/HZ	3/60	WK2 (LB-FT ²)	0.934				

Vector PWM Inverter Duty
Variable Speed AC Motor Curves

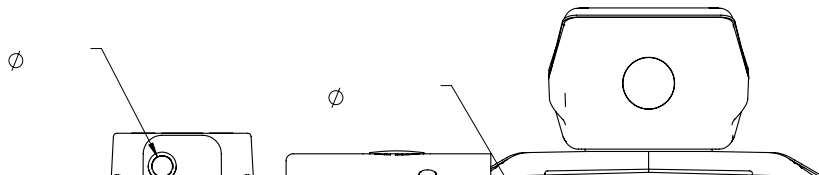
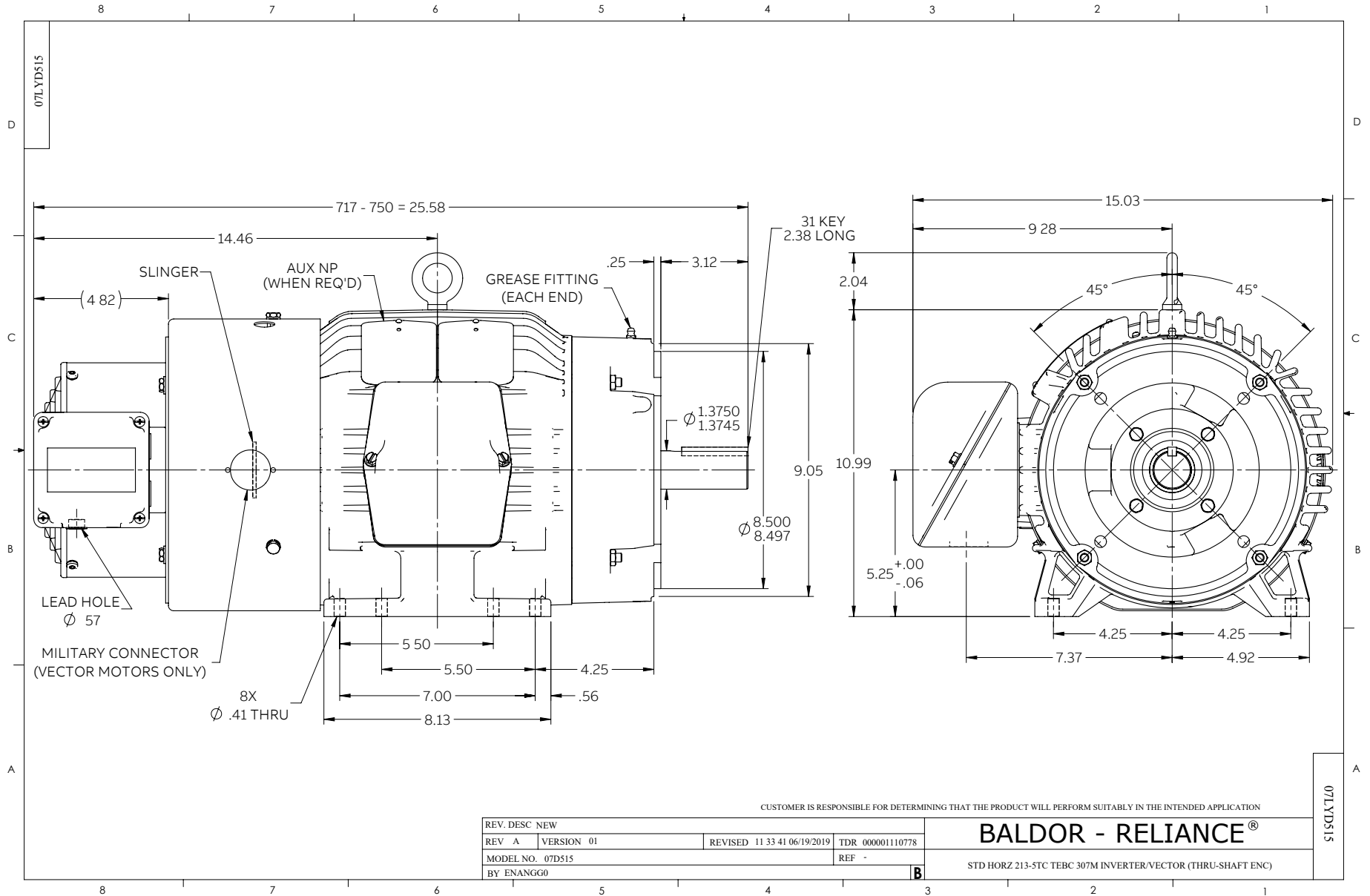


Calculated Data

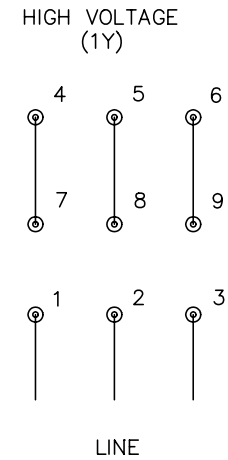
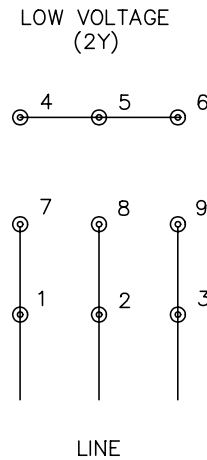
Data Valid For Nameplate Speed Range only

BALDOR
A MEMBER OF THE ABB GROUP

DR BY	USJION	A-C MOTOR	07WG X790
CK BY		PERFORMANCE	
APP BY	USJION	CURVES	
DATE	11/3/2017		Record: 67827



CD0005



NOTES:

1. INTERCHANGE ANY TWO LINE LEADS TO REVERSE ROTATION.
2. OPTIONAL THERMOSTATS ARE PROVIDED WHEN SPECIFIED.
3. ACTUAL NUMBER OF INTERNAL PARALLEL CIRCUITS MAY BE A MULTIPLE OF THOSE SHOWN ABOVE.
4. LEAD COLORS ARE OPTIONAL. LEADS MUST ALWAYS BE NUMBERED AS SHOWN.

REV. DESC: REVISE TO SHOW OPTIONAL COLORS			
REV. LTR: E	BY: JLP	REVISED: 01/19/99 10:15	TDR: 0171435
900000		FILE: AAA00005140	MDL: -
		MTL: -	

BALDOR ELECTRIC Co.

3PH, DV, 9 LEADS

CD0005

Marketing maintained PDF of MN416:

<http://www.baldor.com/support/Literature/Load.ashx/MN416?ManNumber=MN416>